

VS
WASH

PRODUCT INFORMATION

VS WASH®

LAUNDRY TO GO

The VS WASH® is the neat solution for dirty laundry. With our laundry system, dirty laundry can finally be sorted, stored and transported not only neatly, but also completely out of sight. The concealed drop is perfectly integrated into any utility room. Technically and visually, VS WASH® is based on the proven waste separation systems of the VS ENVI® range, creating a uniform look for both recycling and laundry solutions. The

new laundry hampers in a unique variety of types are perforated to ensure optimal air circulation. The perforations are even rounded on the container interior, making a unique contribution to the gentle handling of the laundry. Thanks to the handle, the way to the washing machine is easier than ever before – even with two laundry hampers at once.

VS WASH® System

VS ENVI® System



A single system for laundry and recycling. The different types of use are defined by the containers used.



Handles make it possible to carry up to two containers at the same time

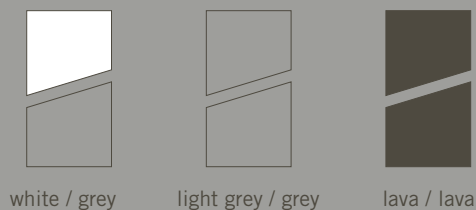


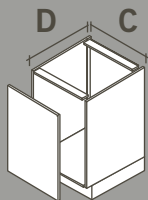
Gentle even on delicate laundry thanks to rounded walls

Container heights



Container/handle colour variants





VARIANTS

C 300

C 400

C 450

D 480 mm

weiß



32 L + Box



44 L



2 x 32 L

D 520 mm

weiß



32 L + Box



44 L



2 x 35 L

D 480 mm

hellgrau



32 L + Box



44 L



2 x 32 L

D 520 mm

hellgrau



32 L + Box



44 L



2 x 35 L

D 480 mm

lava



32 L + Box



44 L



2 x 32 L

D 520 mm

lava



32 L + Box



44 L



2 x 35 L

AT A GLANCE

C 500



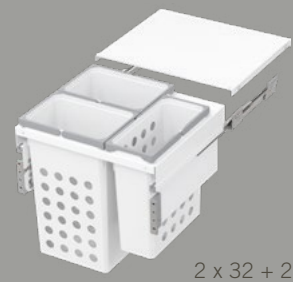
2 x 32 L

C 600



2 x 44 L

C 600



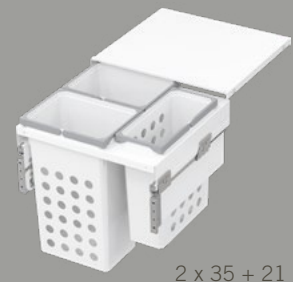
2 x 32 + 21 L



2 x 35 L



2 x 44 L



2 x 35 + 21 L



2 x 32 L



2 x 44 L



2 x 32 + 21 L



2 x 35 L



2 x 44 L



2 x 35 + 21 L



2 x 32 L



2 x 44 L



2 x 32 + 21 L



2 x 35 L



2 x 44 L



2 x 35 + 21 L



FURTHER INFORMATION AS WELL AS INSTALLATION INSTRUCTIONS AND VIDEOS:

WWW.VAUTH-SAGEL.COM

CONTACT: VS@VAUTH-SAGEL.COM

LAST UPDATED APRIL 2023

© BY VAUTH-SAGEL | ALL RIGHTS RESERVED

