

VS  
TAL



VS  
SUB

PRODUCT INFORMATION

**VS SUB<sup>®</sup> LARDER**

**VS TAL<sup>®</sup> LARDER**

**+ VS LARDER FLEX**

**JUST PUT IT  
SOMEWHERE**

**VS**

**HAVING THE BEST NEW  
ORGANISATION SYSTEM**

Every kitchen is different, has a different space layout, and needs to satisfy a variety of both functional and aesthetic requirements. With the **VS Larder components**, Vauth-Sagel provides a modular, state-of-the-art larder system that can be adapted to a wide range of needs.



## Content

- Intro
- New: the VS SUB® Larder
- Presentation of VS Larder components
- VS Larder Flex
- VS ADD® Box

■ VS SUB® LARDER



**NEW**  
VS SUB® Larder

VS SUB® LARDER WITH VS LARDER FLEX AND VS ADD® BOX

# THE WELL-THOUGHT-OUT BASE CABINET PULL-OUT

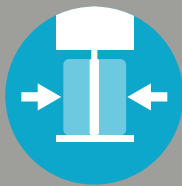
With the new **VS SUB® Larder** base unit, another flexible storage solution is now available within the Larder modular system - ideal for those who love it when everything in their kitchen is thoughtfully stored away.

## Benefits for the user



### Cushioning and self-closing

The integrated cushioning mechanism ensures smooth and silent use.



### Convenient access

Brings all contents out of the cupboard. Everything can be accessed easily from both sides.



### Complete overview

When the door is opened, all of the cupboard's contents can be seen at a glance.



### Time saving

Direct access to all contents. No rummaging about – this saves time and spares your nerves.

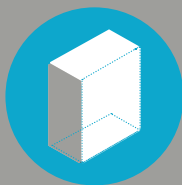


### Individual height adjustment for trays

Simply adapt the VS SUB® Larder to your individual requirements.

---

## Benefits for the installer



### Floor and side assembly possible



### Easy Fit

Simple frame assembly on the runners and to the front.



### 3D front adjustment

Facilitates the convenient and simple adjustment of the front.



### Lower stock keeping

In combination with VS TAL® Larder trays, baskets, designs.

# AN ASTONISHING AMOUNT OF STORAGE SPACE

The two larder solutions **VS SUB® Larder** (base cabinet) and **VS TAL® Larder** (Hochschrank) (tall cabinet) offer all kinds of storage space. They form the foundation for a well-thought-out, clearly arranged kitchen and utility room.

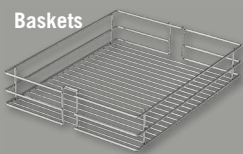
The trick: the tray dimensions in both cabinets are identical, meaning that they can be equipped with the same elements. The high-quality look of the powder-coated surfaces also contributes to a tidy overall impression. Trays and baskets are available in the design collections Classic, Saphir, Premea,

Scalea, Planero and Essentio. With minimal space requirement, you get two fully fledged products with countless variations.

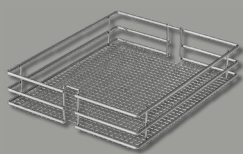
But that isn't all. In combination with the new **VS Larder Flex trays**, tall and base cabinets can be personalised still further and tailored to the desired purpose. Whether food, kitchen utensils or cleaning products – everything can be seen at a glance and accessed from both sides. The construction set is rounded off with the storage solution **VS ADD® Box**, which ensures order within the system down to the last corner.

## Tray designs

Baskets

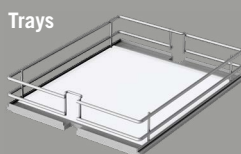


Classic

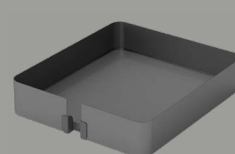


Saphir

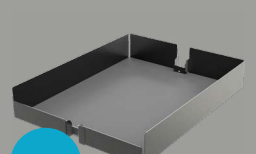
Trays



Premea



Planero®



NEW

Essentio

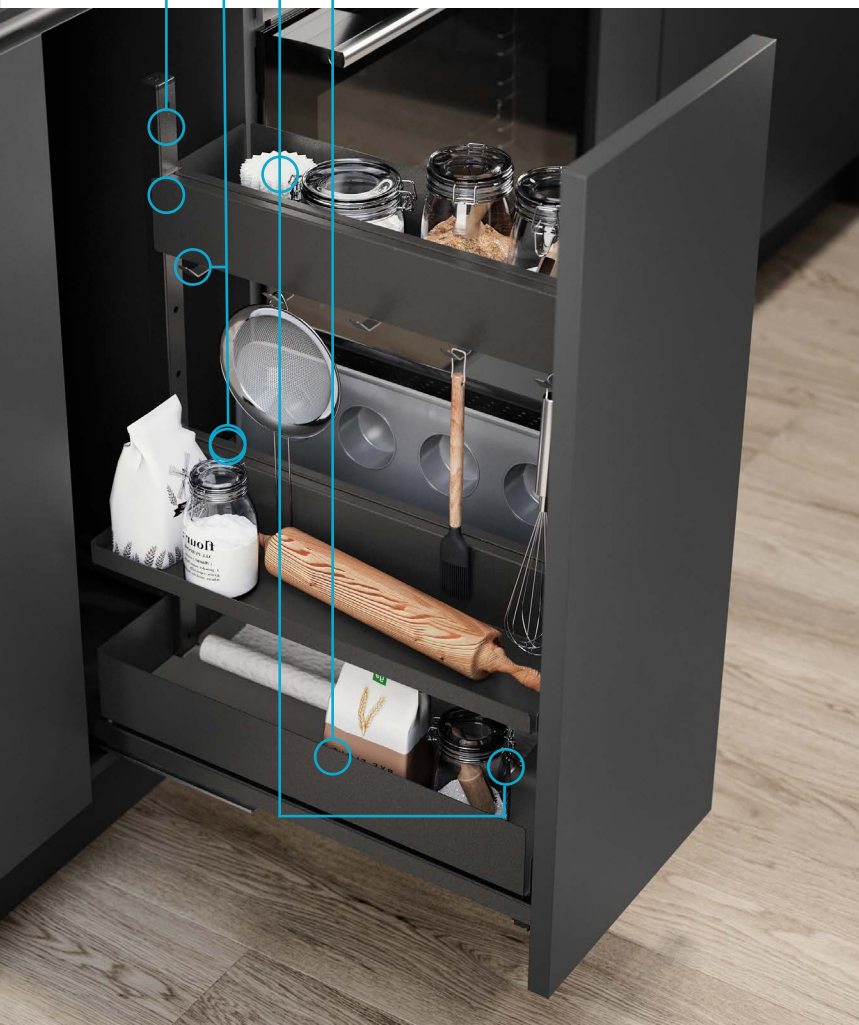
VS TAL® LARDER

VS SUB® LARDER

VS LARDER FLEX

VS ADD® BOX

VS LARDER TRAY / BASKET



VS SUB® LARDER + VS LARDER FLEX + VS ADD® BOX



VS TAL® LARDER + VS LARDER FLEX + VS ADD® BOX

# THE MEASURE OF THINGS – IN TWO VERSIONS

The two larder solutions have it all. Whether with the compact **VS SUB® Larder** or generously sized **VS TAL® Larder** – there is no better way to make use of space.

## Installation dimensions VS SUB® Larder

**Floor-mounted installation** frame with floor-mounted runners for corpus width 300 / 400 mm and 450 – 500 mm

**Side-mounted installation** installation frame with side-mounted runners for corpus width 300 mm and 400 mm

**Installation height** min. 650 – 850 mm

**Installation depth** 470, 497, 575 mm

## Installation dimensions VS TAL® Larder

**Corpus widths** 300, 400, 450 und 500 mm

**Installation height** 650 bis 2330 mm

**Installation depth** 470, 500 oder 575 mm

---

## Colour variants



white



silver



lava





VS SUB® LARDER + VS LARDER FLEX + VS ADD® BOX



VS TAL® LARDER + VS LARDER FLEX

VS LARDER FLEX



VS SUB® LARDER + VS LARDER FLEX



VS TAL® LARDER + VS LARDER FLEX + VS ADD® BOX

# FLEXIBILITY BEGINS WITH FLEX

With the flexible modular solution **VS Larder Flex**, Vauth-Sagel brings order to the cupboard interior. Both in the kitchen and the utility room, **VS Larder Flex** facilitates tailored solutions for typical storage requirements in the stove, oven, sink or washing machine areas.

The individual trays can be combined into different theme sets and make the new base cabinet pull-out.

**VS SUB® Larder** or tall-cabinet **VS TAL® Larder** into a perfectly adapted storage solution.

Two basic elements play a crucial role here: the storage trays – or baskets if desired – and the frame. Using the **VS Larder Flex Clip**, trays and baskets can be fitted to the desired height straightforwardly and without tools.

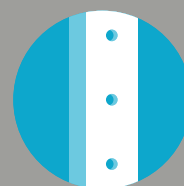
## Benefits, VS Larder Flex



Front and back can be used in different ways



Various trays for different applications



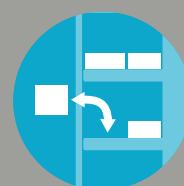
Hole pattern for simple adjustment to various heights



Compatible with VS TAL® Larder and VS SUB® Larder



For kitchen and utility area, frame customisable with filling



Modular coordination with VS ADD® Box and VS ADD® Separator

# SPACE-SAVING VERSATILITY

With the **VS Larder® Flex** elements, tall and base cabinets become true space savers. A number of components are available for this purpose.

## The basic elements

The storage tray **VS Larder Flex Tray** in two heights, H0 & H2, serves as a storage board with double-sided access and is designed to integrate the **VS ADD® Boxen**. The boxes are form-fitted and are completed by the back contour to form a unit. The magnetic separating element **VS ADD® Separator** can be used to add additional divisions in the depth. The material, proportions and finishes are perfectly coordinated.

The frame **VS Larder Flex Frame** fulfils a wide variety of functions. Among other things, it serves as a lateral holder and tip protector above the trays, e.g. for baking trays, chopping boards, step ladders and more.

In addition, the frame can be transformed into a flush-mounted tray and be further customised with the insertion of 19-mm-thick standard wood composites.

## The components: fixture and tray or basket fitting

### VS SUB® Larder



Fixture VS SUB® Larder

### VS TAL® Larder

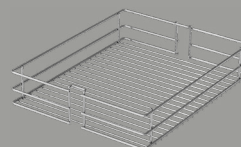


Fixture VS TAL® Larder

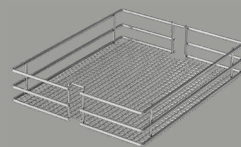


### VS Larder Baskets & Trays

#### Baskets

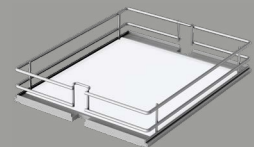


Classic

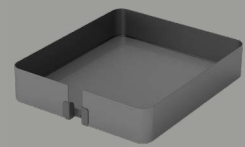


Saphir

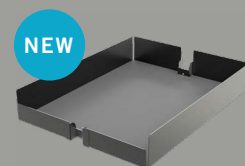
#### Trays



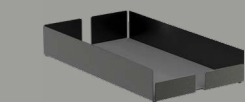
Premea



Planero



Essentio



VS Larder Flex Bottom Tray  
(only for VS SUB® Larder)

NEW

## Additional Flex elements

The hook rail **VS Larder Flex Hook** – cloths, towels, cooking utensils, or even a dustpan and brush can be hung conveniently from it.

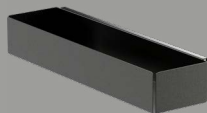
The kitchen roll holder **VS Larder Flex Roll** – kitchen rolls are optimally integrated with this. Thanks to the intelligent design,

paper towels can be separated straightforwardly without having to remove the roll.

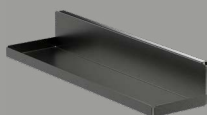
The broom holder **VS Larder Flex Broom** – makes the broom simply disappear behind the cupboard door.

### VS Larder Flex

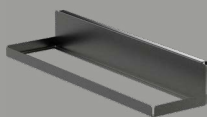
#### Basic elements



VS Larder Flex Tray H2

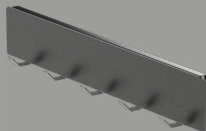


VS Larder Flex Tray H0

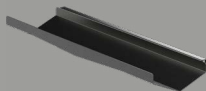


VS Larder Flex Frame

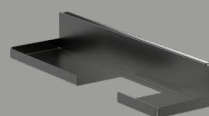
#### Additional elements



VS Larder Flex Hook



VS Larder Flex Roll

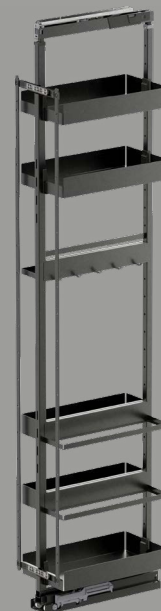


VS Larder Flex Broom

### Example combination



VS SUB® Larder  
with VS Larder Flex



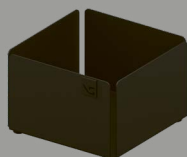
VS TAL® Larder  
with VS Larder Flex



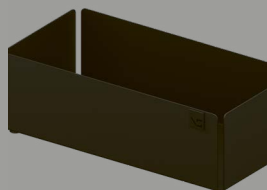
# SMALL COMPONENT – BIG EFFECT

VS Larder Flex can be supplemented with different VS ADD® Box variants.  
The available storage space can thus be optimally used and exploited to the full.

Metal boxes (height/width/depth)



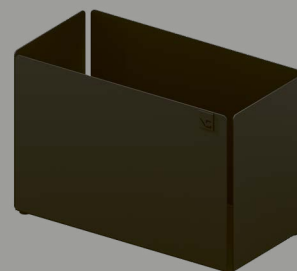
VS ADD® Box-M2 1x1  
70/105/105mm / 650 ml



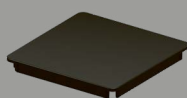
VS ADD® Box-M2 2x1  
70/213/105mm / 1350 ml



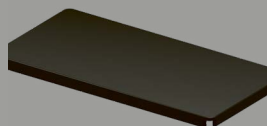
VS ADD® Box-M3 1x1  
140/105/105mm / 1350 ml



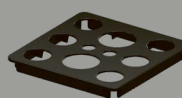
VS ADD® Box-M3 2x1  
140/213/105mm / 2750 ml



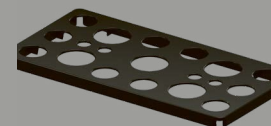
VS ADD® Box-M Lid 1x1



VS ADD® Box-M Lid 2x1

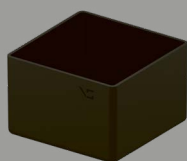


VS ADD® Box-M Lid-hole 2x1

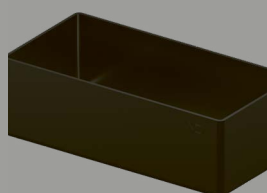


VS ADD® Box-M Lid-hole 2x1

Plastic boxes (height/width/depth)



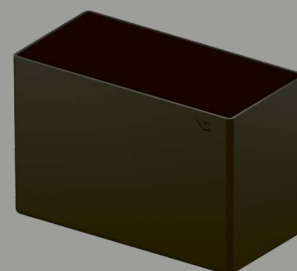
VS ADD® Box-P2 1x1  
70/105/105mm / 650 ml



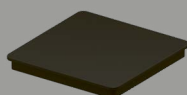
VS ADD® Box-P2 2x1  
70/213/105mm / 1350 ml



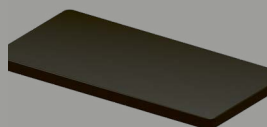
VS ADD® Box-P3 1x1  
140/105/105mm / 1350 ml



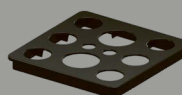
VS ADD® Box-P3 2x1  
140/213/105mm / 2750 ml



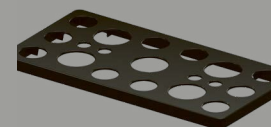
VS ADD® Box-P Lid 1x1



VS ADD® Box-P Lid 2x1



VS ADD® Box-P Lid-hole 1x1



VS ADD® Box-P Lid-hole 2x1



VS ADD® BOX IN USE



FURTHER INFORMATION AS WELL AS INSTALLATION INSTRUCTIONS AND VIDEOS:

[WWW.VAUTH-SAGEL.COM](http://WWW.VAUTH-SAGEL.COM)

CONTACT: [VS@VAUTH-SAGEL.COM](mailto:VS@VAUTH-SAGEL.COM)

LAST UPDATED APRIL 2023

© BY VAUTH-SAGEL | ALL RIGHTS RESERVED

